

ORIIA

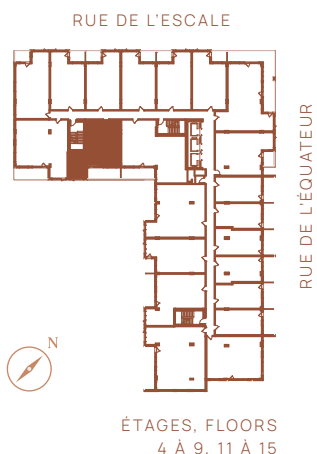
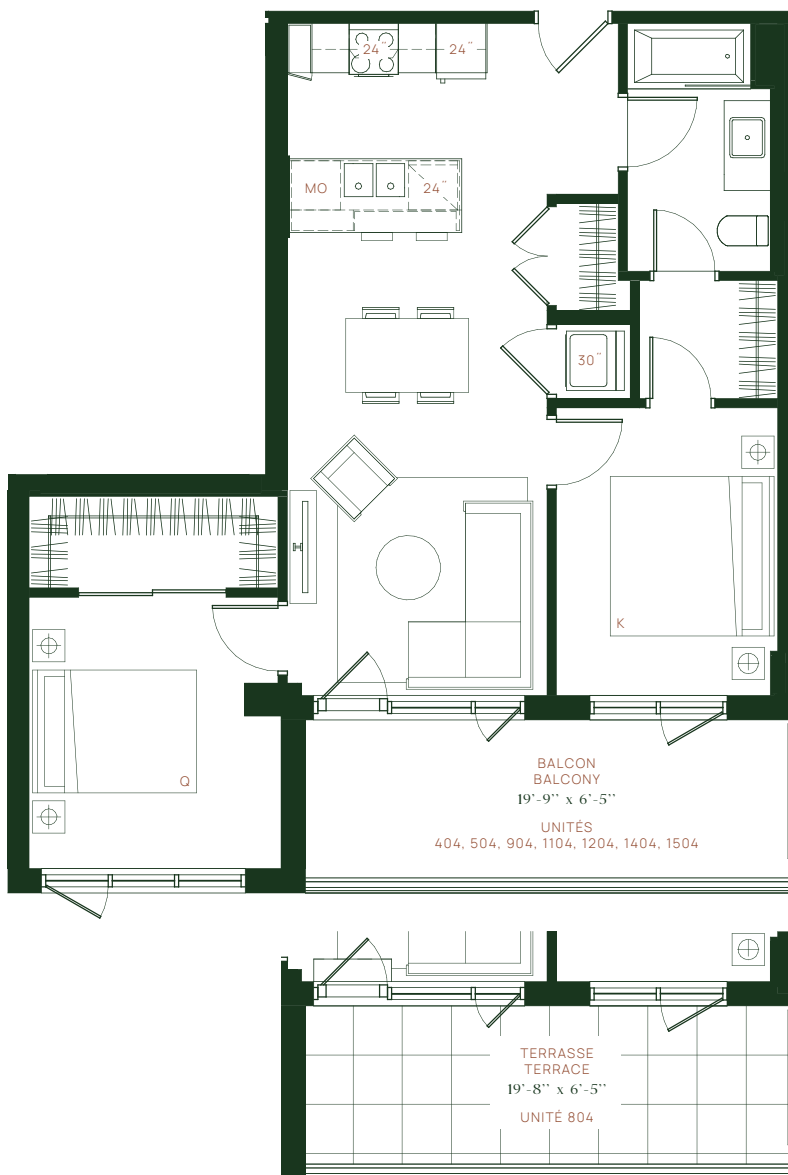
CONDOMINIUMS

2.5A

UNITÉS 404, 504, 804, 904, 1104, 1204, 1404, 1504

2 CHAMBRES

774 PI²/SQ.FT



CUISINE
KITCHEN
10'-7" x 8'-6"

SÉJOUR
LIVING ROOM
10'-7" x 18'-10"

SALLE DE BAIN #1
BATHROOM #1
5'-10" x 10'-1"

CHAMBRE PRINCIPALE
MASTER BEDROOM
9'-0" x 11'-9"

CHAMBRE #2
BEDROOM #2
10'-2" x 10'-11"

BALCON
BALCONY
voir plan

Oria / 2020-11-05

Plans préliminaires sujets à changements. La superficie brute des logements n'inclut pas celle des balcons et/ou terrasses. La superficie et la dimension des plans de vente sont approximatives et peuvent varier. Preliminary plans subject to modifications. The unit area excludes the balcony and/or terraces. The areas are approximate and are subject to variation.

