

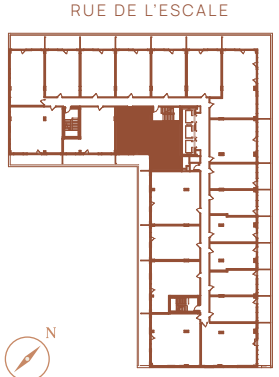
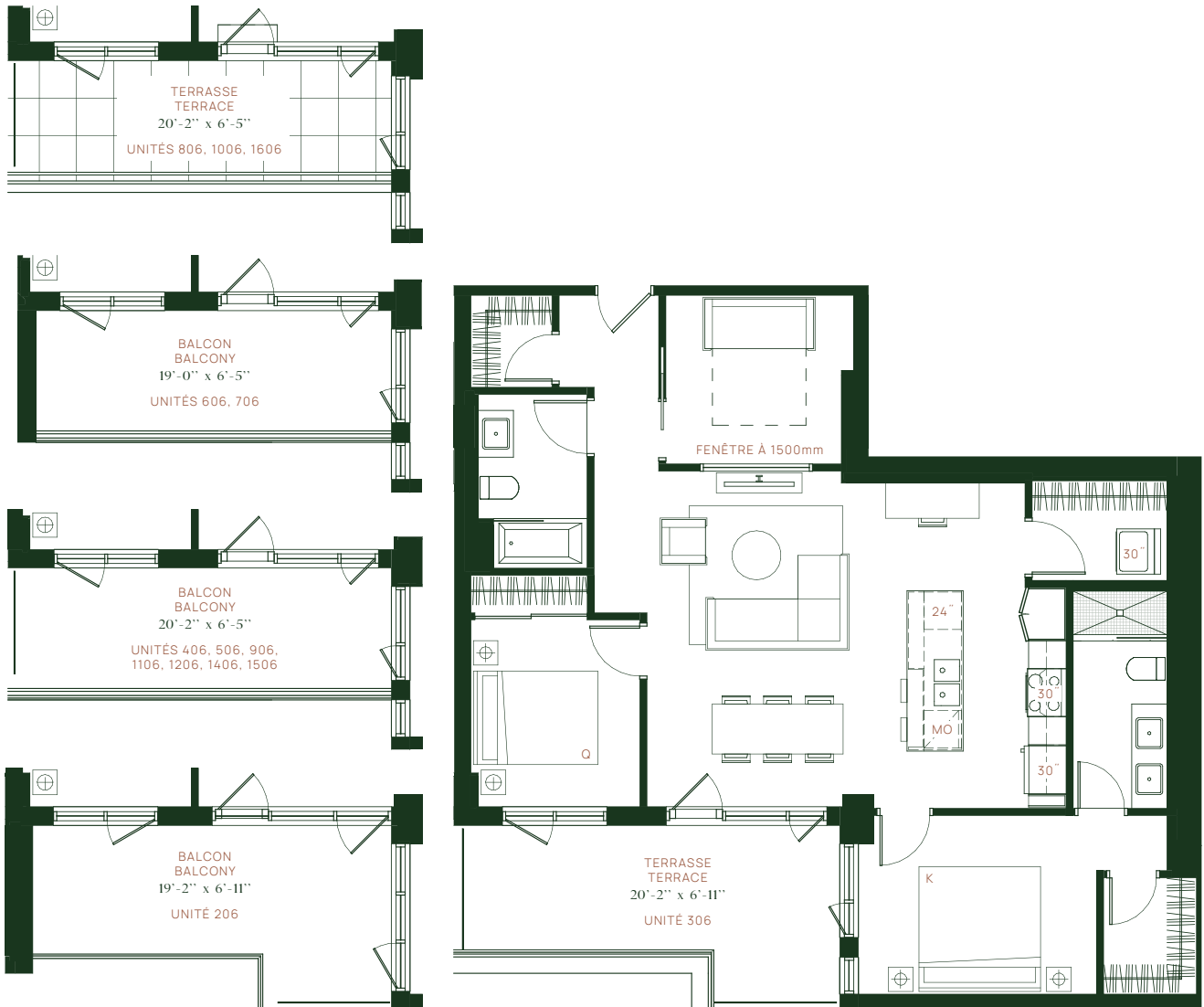
# ORIA

CONDOMINIUMS

# 2.2

**UNITÉS** 206, 306, 406, 506, 606, 706, 806, 906, 1006, 1106, 1206, 1406, 1506, 1606

**2 CHAMBRES** — **1 110 PI<sup>2</sup>/SQ.FT**



ÉTAGES, FLOORS  
2 À 16

**ENTRÉE**  
ENTRY  
5'-4" x 4'-11"

**CUISINE**  
KITCHEN  
8'-6" x 11'-8"

**SÉJOUR**  
LIVING ROOM  
13'-11" x 17'-11"

**SALLE DE BAIN #1**  
BATHROOM #1  
5'-10" x 9'-3"

**SALLE DE BAIN #2**  
BATHROOM #2  
5'-0" x 11'-5"

**LAVERIE**  
LAUNDRY ROOM  
7'-2" x 5'-7"

**CHAMBRE PRINCIPALE**  
MASTER BEDROOM  
12'-9" x 9'-7"

**CHAMBRE #2**  
BEDROOM #2  
9'-0" x 10'-0"

**BUREAU**  
OFFICE  
10'-1 x 9'-0"

**BALCON**  
BALCONY  
voir plan

Oria / 2020-11-05

Plans préliminaires sujets à changements. La superficie brute des logements n'inclut pas celle des balcons et/ou terrasses. La superficie et la dimension des plans de vente sont approximatives et peuvent varier. Preliminary plans subject to modifications. The unit area excludes the balcony and/or terraces. The areas are approximate and are subject to variation.

