

ORIA

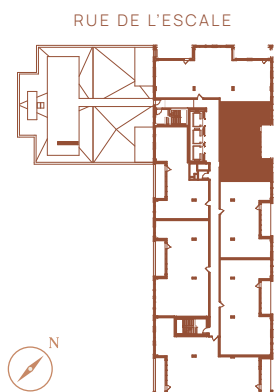
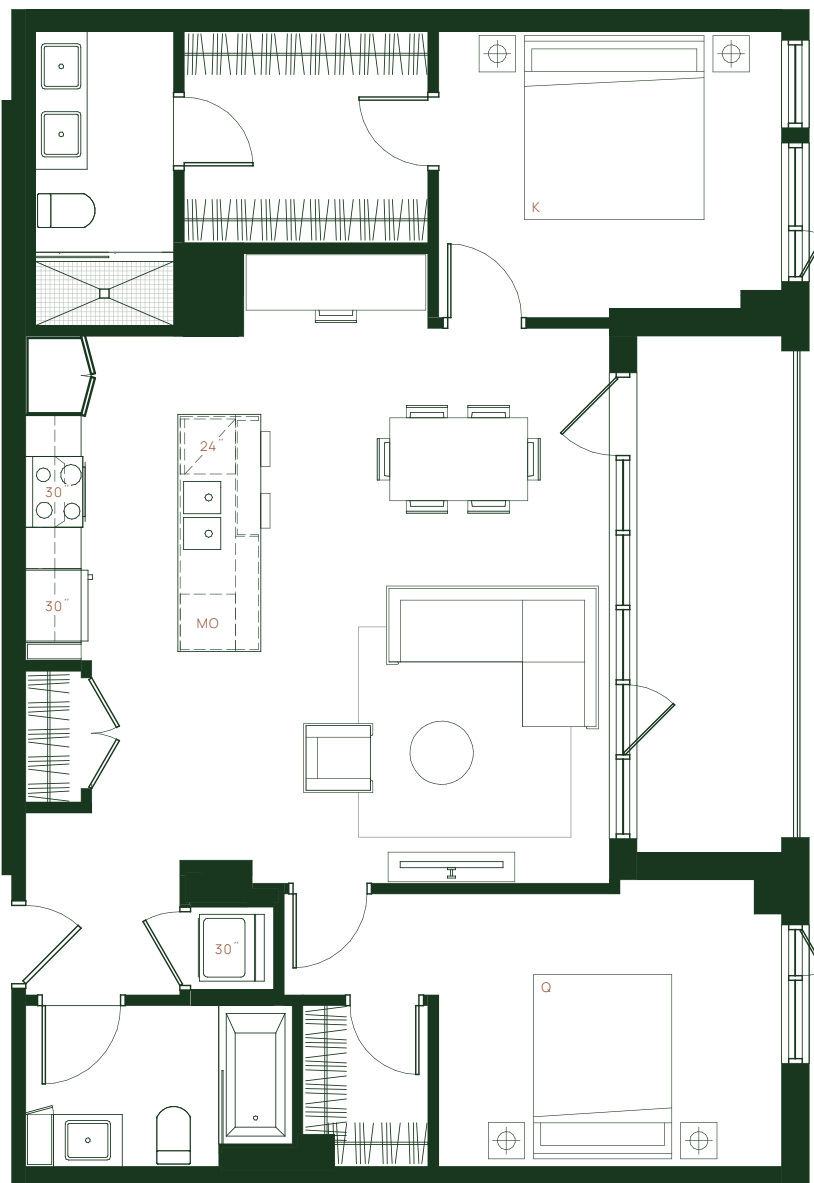
CONDOMINIUMS

2.15

UNITÉS 1703, 1803

2 CHAMBRES

1 087 PI²/SQ.FT



ÉTAGES, FLOORS
17 & 18

ENTRÉE
ENTRY
5'-7" x 6'-7"

CUISINE
KITCHEN
8'-6" x 11'-6"

SÉJOUR
LIVING ROOM
12'-7" x 20'-1"

SALLE DE BAIN #1
BATHROOM #1
9'-8" x 5'-10"

SALLE DE BAIN #2
BATHROOM #2
5'-0" x 10'-8"

CHAMBRE PRINCIPALE
MASTER BEDROOM
12'-5" x 10'-4"

CHAMBRE #2
BEDROOM #2
12'-5" x 9'-11"

BALCON
BALCONY
5'-11" x 18'-8"

Oria / 2020-11-05

Plans préliminaires sujets à changements. La superficie brute des logements n'inclut pas celle des balcons et/ou terrasses. La superficie et la dimension des plans de vente sont approximatives et peuvent varier. Preliminary plans subject to modifications. The unit area excludes the balcony and/or terraces. The areas are approximate and are subject to variation.

solar
UNIQUARTIER™

DEVIMCO
IMMOBILIER