

# ORIA

CONDOMINIUMS

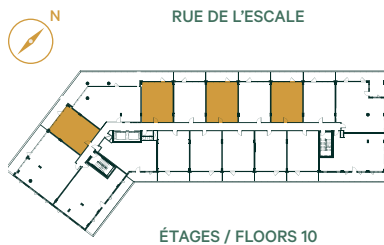
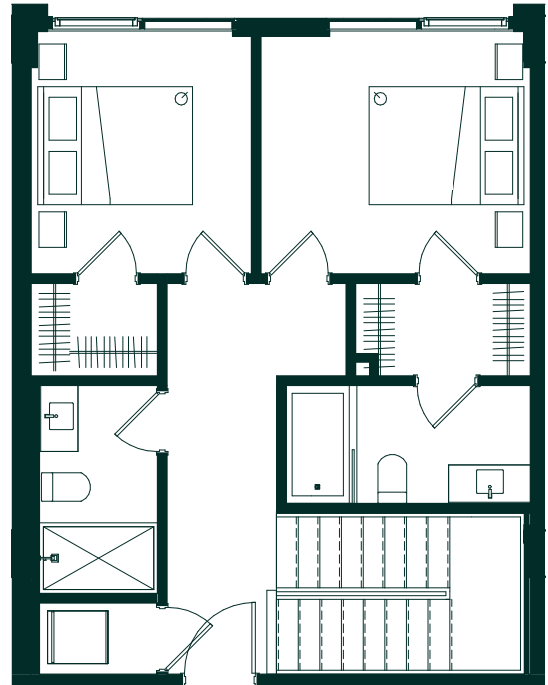
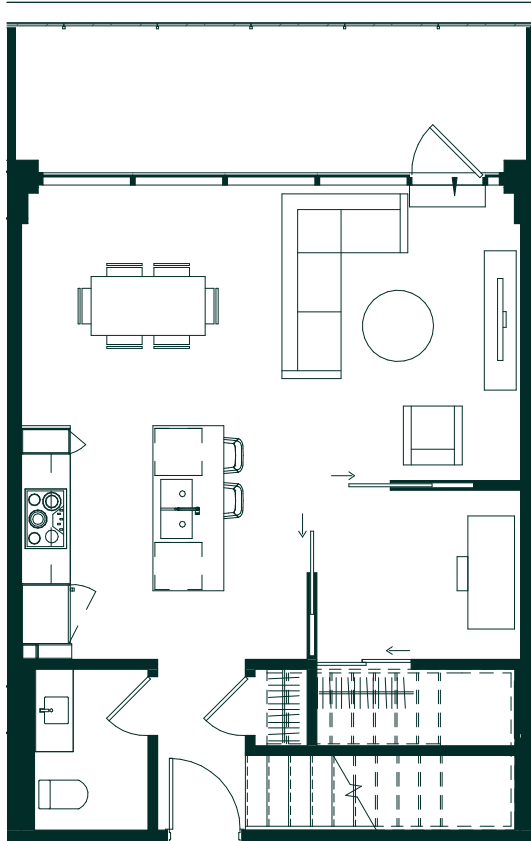
## M1.1 INV

1258 PI<sup>2</sup>/SQ

2 CHAMBRES

UNITÉ

1003, 1009, 1013, 1017



ÉTAGES / FLOORS 10

**CUISINE  
KITCHEN**

9' - 11 ½" X 12' - 1"

**SALLE À MANGER  
DINING ROOM**

10' - 11 ½" X 10' - 6 ½"

**SÉJOUR  
LIVING ROOM**

10' - 7 ½" X 12' - 5 ½"

**SALLE D'EAU  
WET ROOM**

4' - 10" X 6' - 10"

**BUREAU  
OFFICE**

7' - 2" X 9' - 1"

**BALCON  
BALCONY**

22' - 2 ½" X 6' - 2 ½"

**CHAMBRE PRINCIPALE  
MASTER BEDROOM**

11' - 5" X 10' - 4"

**WALK-IN ATTENANT  
WALK-IN CLOSET**

3' - 11" X 7' - 5"

**SALLE DE BAIN  
BATHROOM**

10' - 4" X 5' - 4 ½"

**CHAMBRE #2  
BEDROOM #2**

9' - 4" X 10' - 4"

**WALK-IN ATTENANT  
WALK-IN CLOSET**

5' - 4" X 3' - 11"

**SALLE DE BAIN  
BATHROOM**

8' - 10" X 5' - 4 ½"

Oria / 2019-12-02

Plans préliminaires sujets à changements. La superficie brute des logements n'inclut pas celle des balcons et/ou terrasses. La superficie et la dimension des plans de vente sont approximatives et peuvent varier. Preliminary plans subject to modifications. The unit area excludes the balcony and/or terraces. The areas are approximate and are subject to variation.

**solar**  
UNIQUEARTIER™

**DEVIMCO**  
IMMOBILIER