

# ORIA

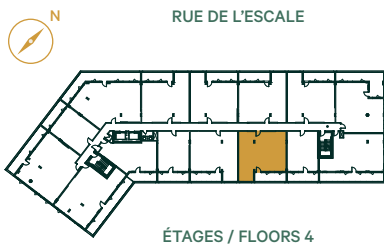
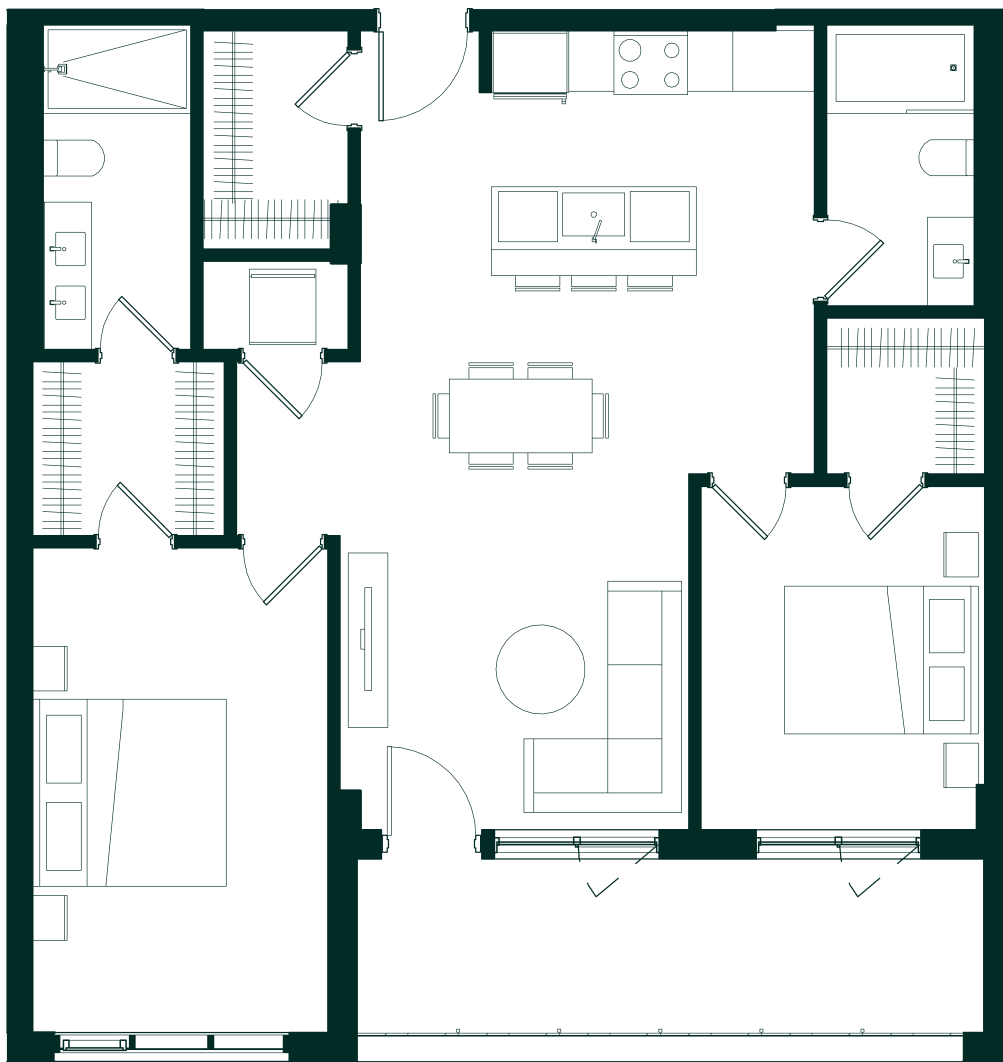
CONDOMINIUMS

## B5.2 INV

1021 Pl<sup>2</sup>/sq. ft.

2 CHAMBRES

UNITÉ  
410, 510, 810, 910



ÉTAGES / FLOORS 4

<b>CUISINE</b> KITCHEN 10' - 11 ½" X 8' - 4 ½"	<b>WALK-IN ATTENANT</b> WALK-IN CLOSET 6' - 6" X 5' - 10 ½"	<b>SALLE DE BAIN #2</b> BATHROOM #2 9' - 6" X 5'
<b>SALLE À MANGER</b> DINING ROOM 11' - 10" X 9' - 4"	<b>SALLE DE BAIN #1</b> BATHROOM #1 11' - 7" X 5'	<b>ENTRÉE</b> ENTRANCE 5' - 7" X 3' - 11"
<b>SÉJOUR</b> LIVING ROOM 11' - 10" X 9' - 4"	<b>CHAMBRE #2</b> BEDROOM #2 9' - 7 ½" X 11' - 7 ½"	<b>WALK-IN D'ENTRÉE</b> ENTRANCE WALK-IN 7' - 4 ½" X 4' - 11"
<b>CHAMBRE PRINCIPALE</b> MASTER BEDROOM 16' - 5" X 10'	<b>WALK-IN ATTENANT</b> WALK-IN CLOSET 5' - 3 ½" X 5' - 4 ½"	<b>BALCON</b> BALCONY 21' - 2 ½" X 5' - 10 ½"

Oria / 2019-12-02

Plans préliminaires sujets à changements. La superficie brute des logements n'inclut pas celle des balcons et/ou terrasses. La superficie et la dimension des plans de vente sont approximatives et peuvent varier. Preliminary plans subject to modifications. The unit area excludes the balcony and/or terraces. The areas are approximate and are subject to variation.

**solar**  
UNIQUARTIER™

**DEVIMCO**  
IMMOBILIER