

ORIA

CONDOMINIUMS

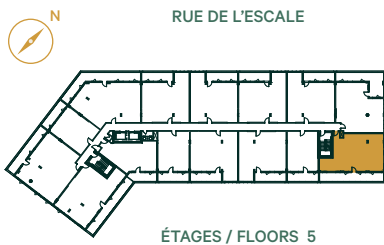
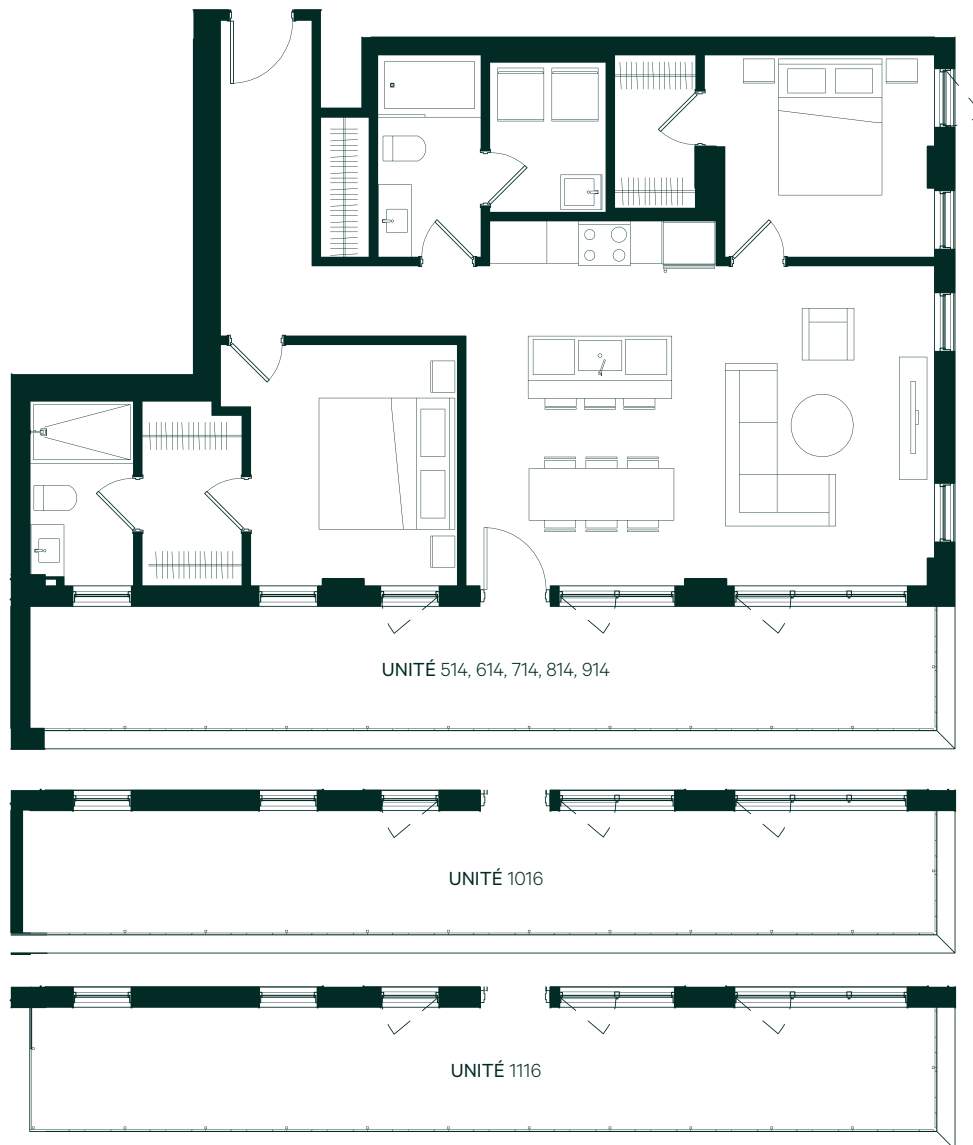
B3.2

UNITÉ

514, 614, 714, 814, 914, 1016, 1116

1078 PI²/sq. ft.

2 CHAMBRES



CUISINE KITCHEN 12' - 1" X 8' - 6 1/2"	WALK-IN ATTENANT WALK-IN CLOSET 4' - 10" X 8' - 11"	SALLE DE BAIN #2 BATHROOM #2 9' - 2 1/2" X 5'
SALLE À MANGER DINING ROOM 12' - 1" X 9' - 0 1/2"	SALLE DE BAIN #1 BATHROOM #1 4' X 10' - 11"	ENTRÉE ENTRANCE 15' - 2 1/2" X 3' - 11 1/2"
SÉJOUR LIVING ROOM 15' - 5" X 10' - 5 1/2"	CHAMBRE #2 BEDROOM #2 9' - 9" X 11' - 1 1/2"	SALLE DE LAVAGE LAUNDRY ROOM 7' X 5' - 7 1/2"
CHAMBRE PRINCIPALE MASTER BEDROOM 11' - 7 1/2" X 10'	WALK-IN ATTENANT WALK-IN CLOSET 7' - 4 1/2" X 3' - 11"	BALCON BALCONY 43' - 10 1/2" X 5' - 11"