

# ORIA

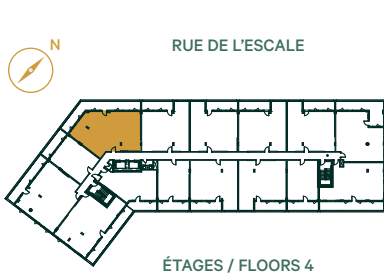
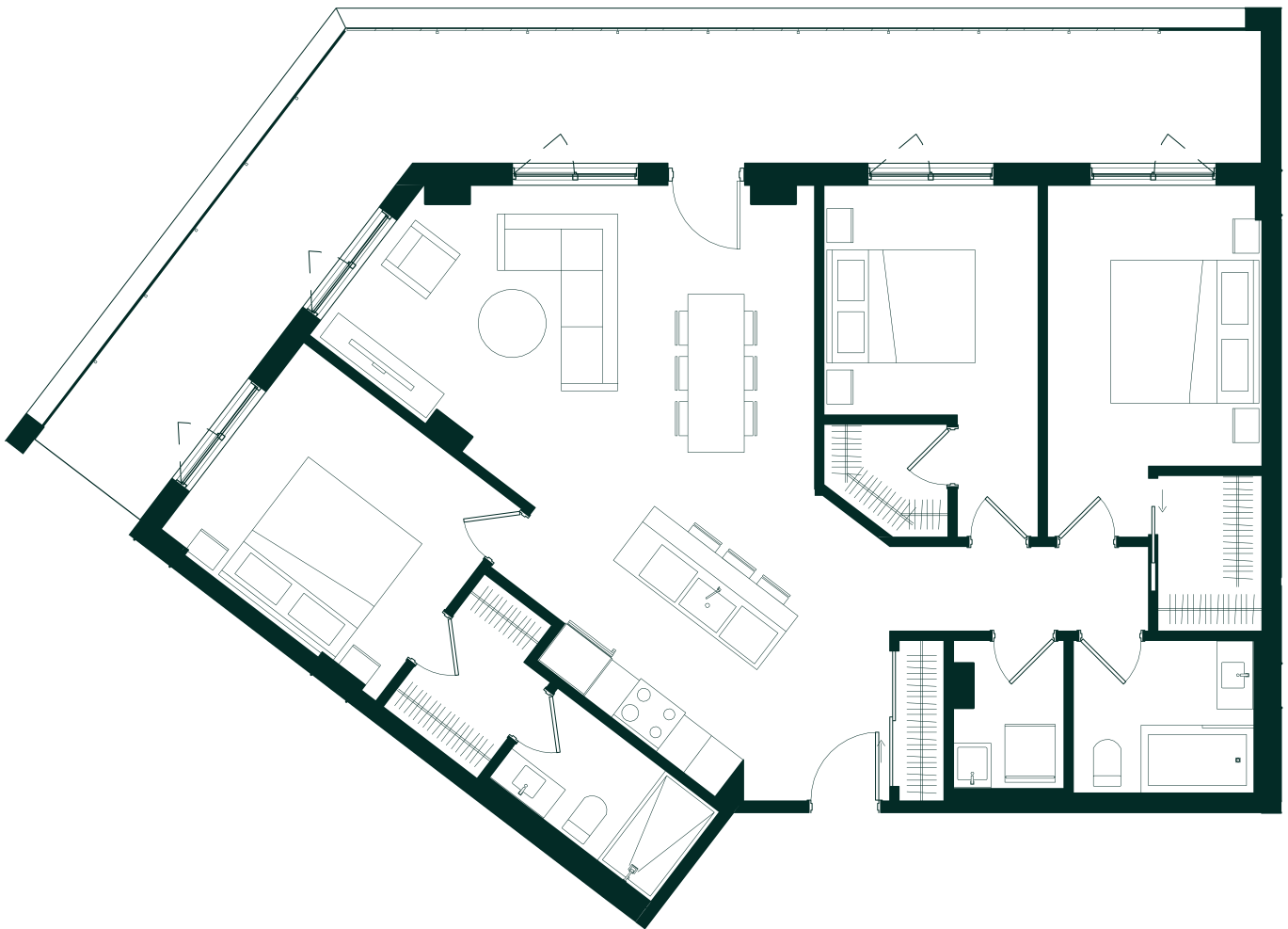
CONDOMINIUMS

## C1

UNITÉ  
405, 505, 805, 905

1262 Pl<sup>2</sup>/sq. ft.

3 CHAMBRES



|   |   |  |   |
|---|---|--|---|
| <b>CUISINE<br/>KITCHEN</b><br>9' - 11 ½" X 13' - 6"             | <b>SÉJOUR<br/>LIVING ROOM</b><br>14' - 1 ½" X 11' - 7 ½"              | <b>CHAMBRE #2<br/>BEDROOM #2</b><br>9' - 6" X 12' - 5 ½"         | <b>ENTRÉE<br/>ENTRANCE</b><br>6' - 6" X 7' - 6"               |
| <b>SALLE À MANGER<br/>DINING ROOM</b><br>8' - 8 ½" X 13' - 5 ½" | <b>CHAMBRE PRINCIPALE<br/>MASTER BEDROOM</b><br>12' - 2" X 10' - 8 ½" | <b>WALK-IN ATTENANT<br/>WALK-IN CLOSET</b><br>6' - 11" X 4' - 7" | <b>BALCON<br/>BALCONY</b><br>46' - 2" X 5' - 10 ½"            |
|   | <b>WALK-IN ATTENANT<br/>WALK-IN CLOSET</b><br>5' - 3" X 7' - 5"       | <b>CHAMBRE #3<br/>BEDROOM #3</b><br>9' - 6" X 10' - 2"           | <b>SALLE DE BAIN<br/>BATHROOM</b><br>7' - 1" X 8'             |
|   | <b>SALLE DE BAIN #1<br/>BATHROOM #1</b><br>9' X 5' - 4 ½"             | <b>WALK-IN ATTENANT<br/>WALK-IN CLOSET</b><br>5' X 5' - 6"       | <b>SALLE DE LAVAGE<br/>LAUNDRY ROOM</b><br>4' - 11" X 7' - 1" |

Oria / 2019-12-02

Plans préliminaires sujets à changements. La superficie brute des logements n'inclut pas celle des balcons et/ou terrasses. La superficie et la dimension des plans de vente sont approximatives et peuvent varier. Preliminary plans subject to modifications. The unit area excludes the balcony and/or terraces. The areas are approximate and are subject to variation.

**solar**  
UNIQUARTIER™

**DEVIMCO**  
IMMOBILIER